

# THE TAROT TIMELINE

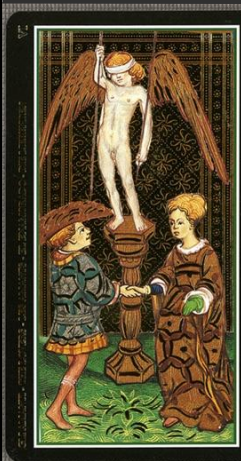
---

## HISTORY



# WHERE IT ALL BEGAN

---



Etteilla.

# WHERE IT ALL BEGAN

---

THE ROOTS OF TAROT GO BACK FARTHER THAN WHAT MANY PEOPLE HAVE BEEN LEAD TO BELIEVE.

LIKE MANY OTHER THINGS STEEPED IN OCCULT TRADITION, THERE IS A LOT OF MISINFORMATION, MISUNDERSTANDING AND SOMETIMES EVEN OUT RIGHT FABRICATIONS AS IT CONCERNS THE ORIGIN, AND USE OF TAROT CARDS.

BECAUSE THERE IS SO MUCH THAT IS UNKNOWN OR KEPT SECRET ABOUT TAROT IT IS EASY FOR THOSE MISCONCEPTIONS TO CONTINUE; PEOPLE UNKNOWINGLY PASSING MYTHS AND UNTRUTHS DOWN THE GENERATIONS.

THE HISTORY OF TAROT IS AN IMPORTANT PART OF YOUR JOURNEY BECAUSE WHEN YOU CONNECT IN WITH THE PAST, YOU CAN UNDERSTAND THE PRESENT IN A MORE INTIMATE WAY.



# TANG DYNASTY PLAYING CARD

618 AD TO 907 AD

The earliest form of playing cards date all the way back to the Tang Dynasty of 618 AD to 907 AD these early versions of playing cards were filled with cultural references and myths that were relevant in their day.

Many historians believe that these cards, though they were used for games were the predecessors of Tarot. There are legends that say the concubines in the emperor's court would entertain themselves with using the cards to divine the futures for themselves and other important personages in the royal house.

# THE MAMLUK EMPIRE



Over time the traders of Asia brought the cards to the Islamic countries of the Middle East as well as to Egypt. Several historians believe that it was the **Mamluk Empire of Egypt** that created a set of playing cards with four suits similar to the ones we see in modern playing cards as well as Tarot.

These were the

**Cups, Polo Sticks, Coins and finally swords.**

Moving forward, once again thanks to traders and merchants we see the cards continue their journey. It's thought that approximately in the **1370's** the Egyptian cards conceived by the Mamluk aristocracy made their way into Europe.



## THE TAROCCHI PLAYERS

FRESCO IN THE CASA BORROMEO, MILAN, ITALY  
15TH CENTURY

## VISCONTI SFORZA TAROCCHI

Later in **1440** the earliest example of Tarot cards was to surface in the same structure that we are familiar with today.

During the Italian renaissance came the emergence of the Tarot consisting of the 78 cards segmented into the Major and Minor Arcana are the earliest on record known by modern historians to date.

It is worth noting that one of most famous decks from that point in history was owned by the very wealthy Duke of Milan in Italy. He commissioned what is known as the **Visconti Sforza Tarocchi** cards.



## KING EDWARD THE 4TH

**1450 - 1500** The church outlaws the use of playing cards and dice

In the 15th century **King Edward the 4th** of England prohibited the importation of Tarot cards into England.

In **1589** The Spanish Inquisition visits Venice deeming Tarot a form of witchcraft

The first volume of the Encyclopedia of Tarot was published by Stuart Kaplan.

**1978**

Aleister Crowley's Thoth deck was created.

**1928-1943**

Arthur E. Waite published the Waite-Smith Tarot deck

**1909**

Famous occultist and magician, Eliphas Levi, further supported the Tarot- Kaballah connection

**1850s**

The first tarot deck for cartomancy/divination was published by Jean-Baptiste Alliette

**1788**

Antoine Court de G belin of France published an essay - Le Monde Primitif and claimed the tarot to be of Egyptian origin

**1781**

A deck called Tarot de Marseilles became popular, and most of the succeeding tarot decks were derived from it.

**1600s**

An inquisition in Venice associated the use of tarot cards with witchcraft.

**1589**

The name trionfi, referring to the triumph cards, was changed into "tarocchi"

**1530s**

**1375-1378**

A playing card emerged in Europe during the Islamic invasion of North Africa and other parts of Europe

**1392**

Charles VI of France paid the artist Jacquemin Gringonneur 56 sols parisiens to paint three deck of cards

**1420-1440**

Tarot cards appeared in Northern Italy. It became a luxurious pastime of the upper classes.

**1422**

Bonifacio Bembo of Italy painted the earliest tarot deck still existing today: the Visconti-Sforza Tarocchi deck.

**1440 - 1475**

The formative years of tarot cards; heralded as the golden age of tarot artistry

**1450 - 1500**

The church preached against the use of dice and playing cards.

**1487**

Cartomancy or the use of playing cards for divination was first mentioned

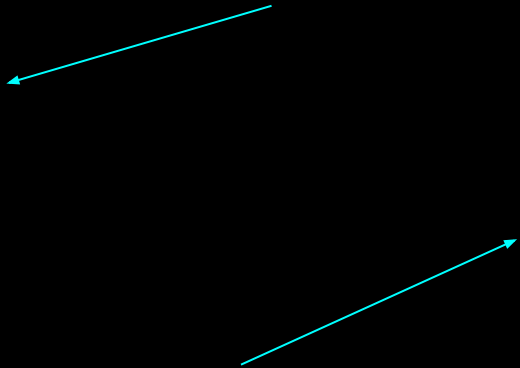
**1500s**

Gutenberg press was invented and it paved way for mass production of tarot cards.



## KNAVE OF COINS

Knave of coins from the oldest known European deck (c.1390-1410).

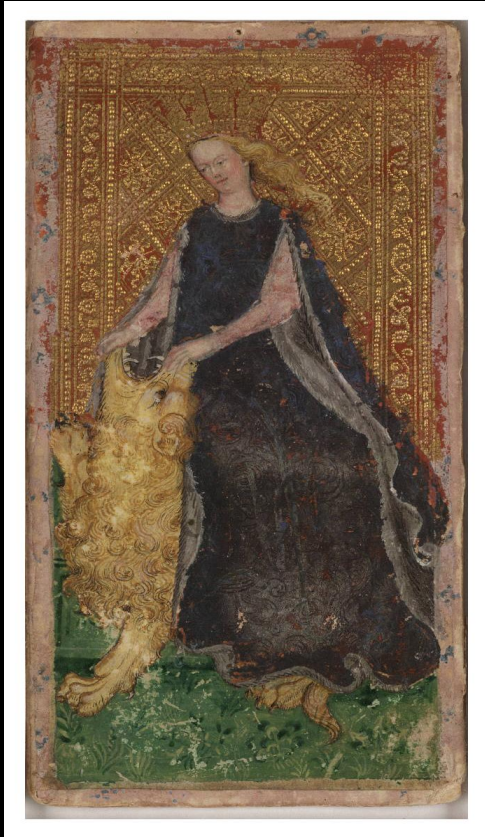


## PAGE OF COINS

Page of coins as illustrated by Pamela Coleman Smith in the Rider - Waite - Smith deck 1909



VISCONTI-SFORZA  
TAROT



TAROT DE MARSEILLE



RIDER WAITE SMITH  
TAROT



VISCONTI-SFORZA  
TAROT



RIDER WAITE SMITH  
TAROT



THE SIRAN STARSEED  
TAROT



# REVIEW

## IMPORTANT DATES

- 618 AD to 907 AD  
Earliest form of playing cards from the Tang Dynasty
- 1370's Playing Cards emerge in Europe
- 1440's Earliest form of Tarot cards Visconti Sforza Tarocchi
- Card games, dice and gambling become illegal in the 1500's

## KEY CONCEPTS

MUCH OF THE REASON THAT TAROT HAS EARNED SUCH AN INFAMOUS REPUTATION IS BECAUSE OF THE PERCEPTION THAT IT WAS A FORM OF WITCHCRAFT.

THE SPANISH INQUISITION RELEGATED ALL THINGS RELATED TO VICE AND ESPECIALLY OF AN OCCULT NATURE TO WORKS OF EVIL.

NONETHELESS, TAROT PERSISTED DESPITE THE EFFORTS TO SUPPRESS IT.

PEOPLE FROM ALL OVER THE WORLD AND THROUGHOUT HISTORY ARE ATTRACTED TO TAROT BECAUSE IT OFFERS A WAY TO CONNECT TO DEEPER PARTS OF SELF AS WELL AS ANOTHER WAY TO ACCESS THE GUIDANCE OF THE DIVINE.

